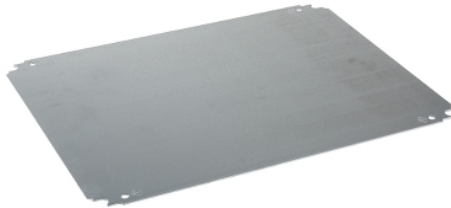


Product data sheet

Characteristics

NSYMM65

Plain mounting plate H500xW600mm made of galvanised sheet steel



Main

Range	Spacial
Accessory / separate part category	Mounting accessory
Product or component type	Mounting plate
Device application	Multi-purpose
Enclosure nominal dimensions	600 mmW: 500 mm
Mounting location	Direct fixing on backstuds Step slide
Mounting plate description	Plain
Range compatibility	Spacial S3D Spacial CRN Spacial S3X Thalassa PLM
Quantity per set	Set of 1
Material	Galvanised steel

Complementary

Fixing mode	Screwed on backstuds - screw type M8 By fixing element
Permanent permissible load	90 kg
Height	550 mm
Width	450 mm
Depth	125 mm
Thickness	1.8 mm
Net weight	3.6 kg

Packing Units

Unit Type of Package 1	PCE
Number of Units in Package 1	1
Package 1 Weight	3.664 kg
Package 1 Height	1 cm
Package 1 width	45 cm
Package 1 Length	55 cm

Offer Sustainability

Sustainable offer status	Green Premium product
REACH Regulation	REACH Declaration
REACH free of SVHC	Yes
EU RoHS Directive	Pro-active compliance (Product out of EU RoHS legal scope) EU RoHS Declaration
Toxic heavy metal free	Yes
Mercury free	Yes

RoHS exemption information	Yes
China RoHS Regulation	China RoHS Declaration
Environmental Disclosure	Product Environmental Profile

Contractual warranty

Warranty	12 months
----------	-----------
